

Hopper picnic AA

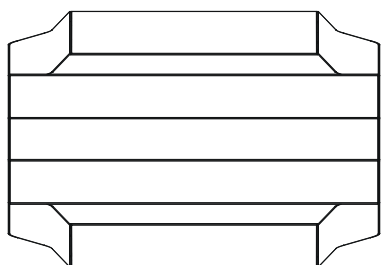
© Design by Dirk Wynants for Extremis, 2019

extremis®



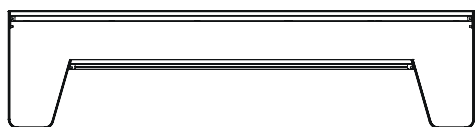
Dimensions

The Hopper picnic AA is available in 3 lengths



62.75 15.0

93.75



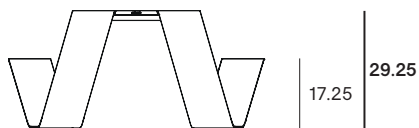
86.5 15.0

117.75



110.0 15.0

141.0



17.25 29.25

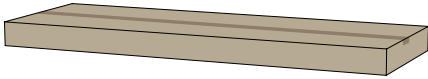
32.75 11.0

64.25

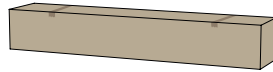
Box dimensions

The Hopper picnic AA comes in 3 boxes

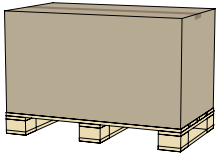
Box 1: Tabletop



Box 2: benches



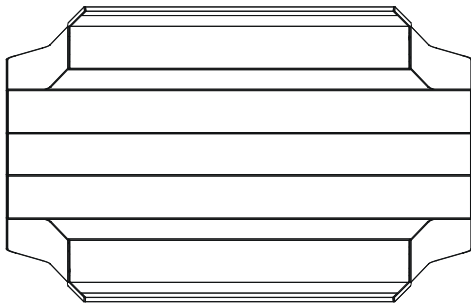
Box 3: Legs + mounting kit



Box dimensions (inch)		L	W	H	Qty	Volume (ft ³)	Gross weight (lb)	Net weight (lb)	Packaging weight (lb)
Hopper picnic AA 240	Box 1	97.25	34.25	6.0	1	11.30	112.43	99.21	13.23
	Box 2	65.0	12.5	10.0	1	4.59	88.18	77.16	11.02
	Box 3	44.25	25.0	24.5	1	15.89	129.19	93.48	35.71
	total:					31.78	329.80	269.85	59.96
Hopper picnic AA 300	Box 1	119.75	34.25	6.0	1	14.13	119.05	103.62	15.43
	Box 2	95.25	12.5	10.0	1	7.06	97.00	83.78	13.23
	Box 3	44.25	25.0	24.5	1	15.89	129.19	93.48	35.71
	total:					37.08	345.24	280.88	64.37
Hopper picnic AA 360	Box 1	147.0	32.24	6.0	1	17.30	145.51	127.87	17.64
	Box 2	119.0	12.5	10.0	1	8.83	116.84	101.41	15.43
	Box 3	44.25	25.0	24.5	1	15.89	129.19	93.48	35.71
	total:					42.02	391.54	322.76	68.78

Backrest

The backrest is available in 3 lengths

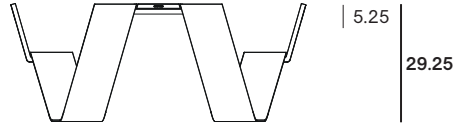


L

Backrest box

The backrests comes in 1 box

Box 5: Profile + supports



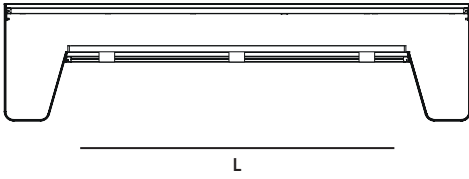
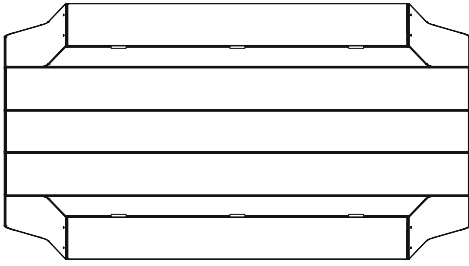
76.5

Dimensions (inch)	L
Backrest for 240	54.75
Backrest for 300	78.5
Backrest for 360	102.25

Box dimensions (inch)		L	W	H	Qty	Volume (ft ³)	Gross weight (lb)	Net weight (lb)	Packaging weight (lb)
Backrest for 240	Box 5	59.0	6.0	4.0	1	0.71	9.92	8.82	1.10
Backrest for 300	Box 5	82.75	6.0	4.0	1	1.06	11.57	9.92	1.65
Backrest for 360	Box 5	106.25	6.0	4.0	1	1.41	13.23	11.02	2.20

Cushion

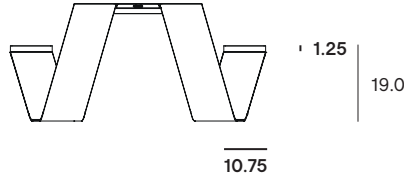
The cushions are available in 3 lengths



Cushion bag

The cushions come in 1 plastic bag

Bag 1: cushion










Dimensions (inch)	L
Cushion for 240	61.75
Cushion for 300	85.5
Cushion for 360	109.0

Box dimensions (inch)		L	W	H	Qty	Volume (m ³)	Gross weight (kg)	Net weight (kg)	Packaging weight (kg)
Cushion for 240	Bag 1	61.75	10.75	1.25	1	0.35	3.53	3.53	0.00
Cushion for 300	Bag 1	85.5	10.75	1.25	1	0.71	4.41	4.41	0.00
Cushion for 360	Bag 1	109.0	10.75	1.25	1	0.71	5.29	5.29	0.00

Materials & colors

Check price list or www.extremis.com for current materials & colors

Tabletop, benches, legs & backrest

	Black (RAL9005) Structured powder coating
	Earth Structured powder coating
	Beach beige (RAL1019) Structured powder coating
	Off white (RAL9002) Structured powder coating
	Verdigris Structured powder coating
	Reed green (RAL6013) Structured powder coating
	Copper brown (RAL8004) Structured powder coating

Sunbrella® cushions

	Grey chiné Sunbrella Natté
	Dark taupe Sunbrella Natté
	Coconut Sunbrella Savane
	Marble Sunbrella Lopi
	Charcoal Sunbrella Lopi
	Leaf green Sunbrella Heritage
	Rust Sunbrella Heritage



Materials	Key facts	Thickness	Layer thickness	Density	In/outdoor	Water	UV color fastness	Flame retarding
		inch	micron					
Structured powder coated aluminium tabletop, bench, legs & backrest	<ul style="list-style-type: none"> A technique of applying dry paint to a part Electrostatically charged and sprayed onto the object More scratch-resistant than non structured powder coating 	0.39	50 - 100	0.47 10 ³ ft/lb ³	Outdoor & indoor	n.a.	Very good: color can fade to some extent when exposed to UV	NEN -EN13501-1 A2-s1 **
Sunbrella® cushions	<ul style="list-style-type: none"> 100% Sunbrella Acrylic Best outdoor fabric available for making cushions Dirt repellent Not waterproof, store inside! Machine washable at max. 30°C. Ironing restores the protective layer 	0.01	n.a.	9.53 oz/ft ²	Outdoor & indoor	The fabric has a water column of 350 mm (EN 20811)	7/8 (ISO 105-B02)	/

NEN-EN13501-1 A2-s1

Satisfying the same criteria as class B for the SBI-test according to EN 13823. In addition, under conditions of a fully developed fire these products will not significantly contribute to the fire load and fire growth

Good to know

- 'Hopper' stands for 'Hop Picker', because the range is inspired by hop gardens, harvests and beer fests.
- The Hopper picnic legs are cut out of an aluminium or metal sheet nearly without any loss of material.

Floor fastening

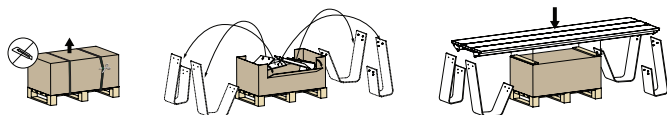
Hopper picnic AA has an optional floor fastening set (ø 0.35 inch), four stainless steel plates to be fixed with bolts.



Important

Use our packaging material for better support to attach the legs to the tabletop.

1. Leave the box on the pallet.
2. Remove the lid of the box.
3. Take the legs out of the box.
4. Put the lid back on the box.
5. Put the tabletop on top of the box.
6. Assemble the Hopper picnic AA.



Maintenance

www.extremis.com/maintenance

POWDER COATED PARTS

- Use Extremis multi cleaner, a 100% biodegradable detergent or common kitchen cleaning products. Avoid using aggressive products. These surfaces are best cleaned with a neutral cleaning product diluted in water.

SUNBRELLA

- Shake or brush off loose dirt immediately.
- Spray Extremis Multi Cleaner.
- Use a soft brush and make circular movements.
- Let the suds soak in for a moment.
- Rinse thoroughly to remove all soap residue.
- Simply allow to dry.
- It's also possible to put the cushion in a washing machine (max 40°C). Follow the cleaning instruction on the label.
- If the cushion has metal brackets, we recommend turning the cover inside out first to avoid damaging the washing machine. In this case, leave the zipper open about 4 inch.

Warnings

General

- Do not use any sharp tools to open the packaging.
- We strongly advise against using power tools.
- Tripping hazard, mind your step.
- Do not put out cigarettes on the table.
- Not graffiti proof.
- Do not leave children unattended whilst playing on the table.
- To avoid danger of suffocation, keep plastic bags away from babies and children.
- Colors can differ over years and from batch to batch.

Product

- Do not drag the table, but carry it with minimum 2 people.

- The packaging material of the legs must stay intact, you need it to attach the legs to the tabletop.
- 240: max. 5 people or 882 lb per bench - 300: max. 6 people or 1058 lb per bench - 360: max. 7 people or 1235 lb per bench.
- Regularly clean the flat surface of the legs.

Powder coating

- White powder coating requires more maintenance.
- Do not use abrasive scouring powders or scourers as they will scratch the surface.
- Color can fade to some extent when exposed to UV.
- Flame retarding - NEN-EN13501-1 A2-sl - Satisfying the same criteria as Class B for the SBI-test according to EN13823. In addition, under conditions of a fully developed fire these products

will not significantly contribute to the fire load and fire growth.

- Dark colors can get very hot in sunny weather.

Sunbrella

- Not waterproof, store inside!
- Shake or brush off loose dirt immediately.
- UV color fastness: 7/8 (ISO 105-B02).

The content of this document, in particular the mentioned models, is protected by copyrights and/or design rights. The present document and its content is communicated to you for information purposes only. Any partial or total reproduction or any other use without our prior written permission is strictly prohibited. This technical sheet remains subject to possible changes. All dimensions are in **inch**, unless mentioned otherwise. Extremis is not responsible for the errors in the documentation of products. All measurements are approximate and are provided for informational purposes only.

**Tech
sheet**
20250115